

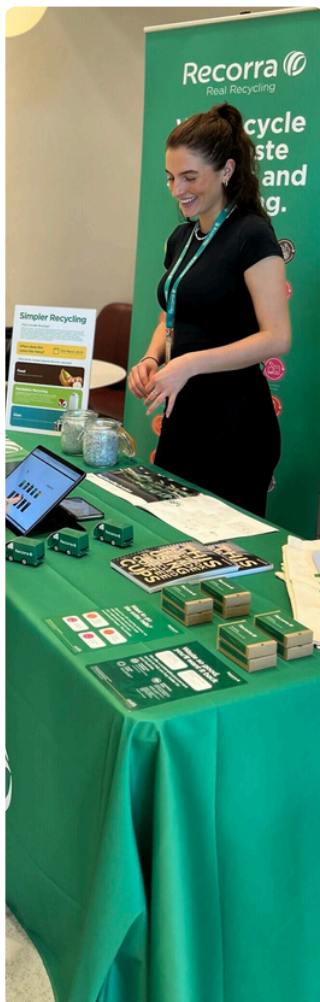


Sustainability Engagement **Services**

An Overview

Getting recycling right in your organisation is easier said than done. Achieving high recycling and low contamination rates depends on several factors including bin infrastructure, recycling streams, and the knowledge of your staff. Recorra are here to help you get it right.

We provide more than simply a waste collection service; our in-house sustainability consultancy team can help transform your scheme and motivate your staff to make correct recycling decisions. Our package of engagement services can help boost your recycling and drive positive change within your organisation.



To find out more or book in engagement services, please contact the sustainability team at:

sustainabilityteam@recorra.co.uk

The Basics: Bin Infrastructure



Back Of House Training

Your back-of-house staff, including cleaners, facilities management staff and security teams, all come into contact with your building's waste. As every building has a different waste management system, this can often lead to confusion amongst staff about which items go in which bins. Our training aims to provide your teams with a thorough understanding on how to properly segregate and dispose of the materials generated throughout your building. The training consists of a short presentation to help identify contamination, the importance of colour coding, and how to correctly segregate each stream.



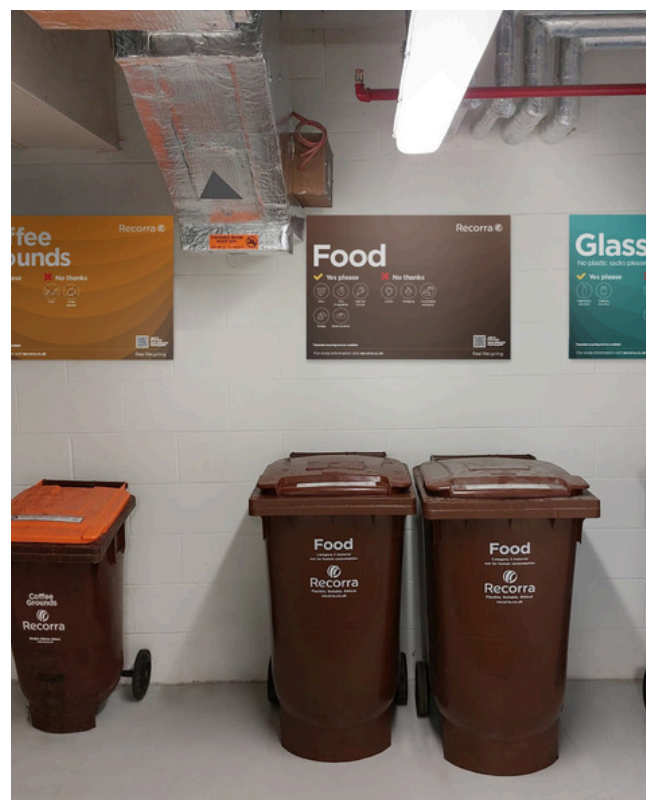
Waste Composition Analysis

Once waste enters a bin, it is difficult to know what exactly has been thrown away, without delving through its contents. We do the messy part for you, through our Waste Composition Analysis. We will audit a full bin of your waste and recycling and categorise, weigh, and photograph its contents. We will provide you with a full report detailing findings and improvement recommendations. Understanding what is being disposed of in your bins allows us to develop strategies to target specific items which may be going into the wrong bins.



Recycling Improvement Strategy

Without the appropriate bin infrastructure on-site, it can be difficult for building users to understand which items go in which bins. Workplace floor walks allow us to advise on improvements that can be made to recycling strategies. In addition, we can inform staff of building recycling processes, to make it as easy as possible for users to recycle correctly. Floor walks will be completed on-site, and a follow-up report will be written with recommendations.



Outdoor Engagement Sessions



Community Clean Up

Our community clean up is a great way to improve the quality of the local environment. Our clean ups demonstrate the detrimental impacts of littering on the environment and reinforces the positive impact of recycling. We carry out the beach cleans on the shores of the River Thames to reduce the amount of litter reaching our marine environments. We also offer the opportunity to host community clean ups in local parks and streets.



Volunteering Days

Completing volunteering days with our charity partners helps your teams make positive environmental contributions. These activities include aiding food banks through our partners Plan Zheroes or lending a hand to animal compounds at London Zoo.



Materials Recovery Facility (MRF) Tour

A visit to our recycling facility helps people understand what really happens to your waste and recycling after it goes in the bin. It is also a great way for you to undertake your due diligence audits and to learn more about the journey of your waste. Our facility is in Purfleet, Essex, where we will take you on a guided tour of the whole facility and walk you through each step of the segregation process.

Occupier Engagement Events



Sustainability Workshops

A high performing recycling scheme relies heavily on your teams' understanding of what can and cannot be recycled. We use virtual or on-site sustainability workshop sessions to educate staff on correct recycling practices. In this interactive and engaging training environment, we cover topics such as, 'where does your recycling go?', 'waste contamination', 'net zero solutions' and include our top tips on how to recycle correctly.



Art From Waste Displays

A visual representation of waste is a great way to dispel the 'out of sight, out of mind' attitude that can be associated with waste disposal. Art can portray hard-hitting messages, and the environmental impact of waste is no exception. We have a range of art installations, all made from waste and recycling, which can be displayed in lobbies or offices. These help to create a talking point for staff and can act as a catalyst for positive change within your building.



Recycling Awareness Day

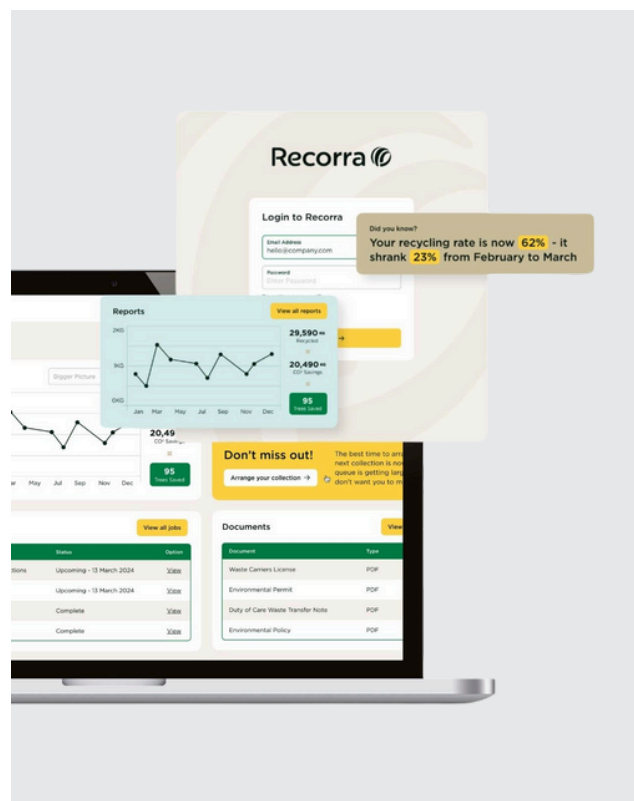
To launch your new and improved recycling scheme, we can undertake a recycling awareness stand within your building to publicise new processes. Using games and competitions to draw in passers-by, we can educate staff on the recycling processes to encourage better recycling behaviours. We will set up an on-site promotional stand with a variety of materials on display, as well as fun prizes for staff to win.

In-depth Reporting



Carbon Report

With the UK pledging a legally binding net zero target, each business must track and reduce their carbon emissions. To support with this and going beyond simply recycling rates, we have developed a bespoke waste Carbon Reporting tool that helps you understand your 'Scope 3' carbon emissions related to waste. We'll provide you with a monthly report that illustrates the carbon impacts of your waste activities. In addition, our report can provide an accurate calculation of your carbon emissions, an important criteria for many accreditations.



Carbon Target Report

Recycling rate projections will allow you to know what changes are necessary to achieve your carbon reduction goals. We can provide you with the required changes to waste streams, service schedules and bin infrastructure to achieve these goals.



Recycle Rates Target Report

Recycling rate projections will allow you to know what changes are necessary on-site to achieve your goals. We can provide you with the required changes to waste streams, service schedules and bin infrastructure to achieve your goals.



London | 52 Lant Street, London, SE1 1RB
T: 020 7407 9100
sustainabilityteam@recorra.co.uk